

4-Port Ethernet Switch



Highlights

- Four 10/100Base-TX ports
- Port configuration of half-duplex and full-duplex
- Port configuration of 10/100Mbps
- Automatic MDI/MDIX selection
- Large frame support (1918 bytes)
- Aging support
- Collision domain isolation and local traffic filtering (switching)
- Segment speed bridging (10 to 100Mbps)
- SNMP management
- Full graphical management with MegaVision Pro®
- Hot-swap support
- Fiber Driver chassis compatibility

Overview

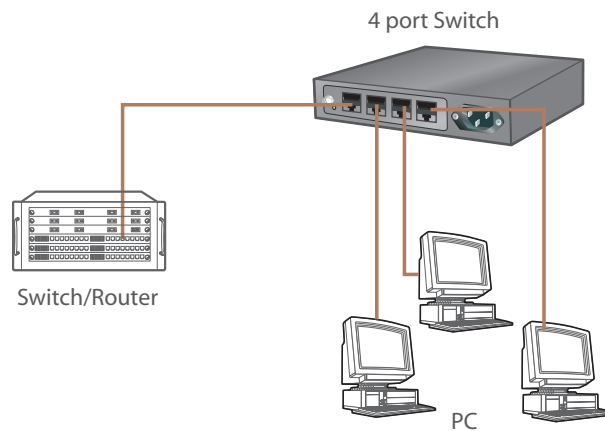
The Fiber Driver® optical solutions family includes a four-port Ethernet and Fast Ethernet switch module (EM316-4SW-R). The switch separates Ethernet collision domains between ports by filtering local traffic from propagating to another port and the rest of the network.

The module is powered from the chassis backplane and is hot-swappable. When installed in a managed Fiber Driver chassis with a Fiber Driver management module, the EM316-4SW-R switch is also configurable through SNMP or a command line interface (CLI).

Switch management allows users to configure the following port parameters.

- 10 Mbps or 100Mbps
- Full-duplex or half-duplex
- MDI or MDIX or automatic selection
- Port enable or disable

The switch module has four unshielded twisted pair (UTP) ports. Each port can auto-negotiate between 10Mbps and 100Mbps and between full-duplex and half-duplex if port parameters are set accordingly.



**Datasheet**

The switch module does not support Spanning Tree Protocol (STP) or virtual local area network (VLAN) configurations.

Switch modules support aging and can forward extended size frames of up to 1918 bytes, allowing transfer of 802.1Q VLAN packets, Q-in-Q, MAC-in-MAC, and MPLS/VPLS over Ethernet.

Contact your MRV Communications sales representative for additional information including pricing and availability.

Physical Specifications	
Operating Temperature Range	0°C to 50°C (32°F to 122°F)
Storage Temperature	-40°C to 70°C (-40°F to 158°F)
Relative Humidity	85% maximum, non-condensing
Physical Dimensions	25 mm x 75 mm x 175 mm deep (1" x 3" x 7" deep)
Weight	Approximately 213 g (7.5 oz)
Maximum Power	10 Watts
Regulatory Compliance	FCC Part 15 (Class A); IC (Class A); EMC Directive: Emission (Class A) and Immunity; RoHS Directive; China RoHS; WEEE Directive

Ordering Info	Model	Function	Protocol	Connectors* Port/Link	Max. Distance (m)
	EM316-4SW-R	4-port 10/100Base-TX Autosensing Switch (UTP)	Ethernet / Fast Ethernet	4 RJ-45	100

*Default connectors listed, other connectors are optional

MRV has more than 50 offices throughout the world. Addresses, phone numbers and fax numbers are listed at www.mrv.com. Please e-mail us at info@mrv.com or call us for assistance.

MRV Los Angeles
20415 Nordhoff Street
Chatsworth, CA 91311
800-338-5316
818-773-0900

MRV Boston
300 Apollo Drive
Chelmsford, MA 01824
800-338-5316
978-674-6800

MRV International
Business Park Moerfelden
Waldeckerstrasse 13
64546 Moerfelden-Walldorf
Germany
Tel. (49) 6105/2070
Fax (49) 6105/207-100

All statements, technical information, and recommendations related to the products herein are based upon information believed to be reliable or accurate. However, the accuracy or completeness thereof is not guaranteed, and no responsibility is assumed for any inaccuracies. Please contact MRV Communications for more information. MRV Communications and the MRV Communications logo are trademarks of MRV Communications, Inc. Other trademarks are the property of their respective holders.