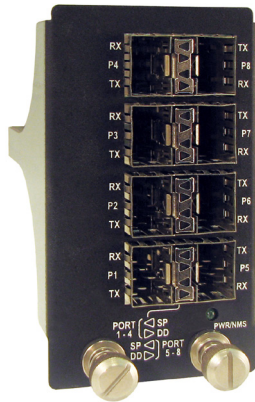


Datasheet

8-port Fast Ethernet Optical Switch

EM316SW-8FX



Highlights

- 8-port Fast Ethernet switch
- 8 SFP ports
- 100Base-FX support (100 Mbps)
- 1536-byte frame size
- Aging (dynamic switch table entries)
- Power and port status LEDs
- Manager “hub” for locations with multiple Fiber Driver chassis
- Hardware configuration
- Network management (EM316LNXM-OT)

Overview

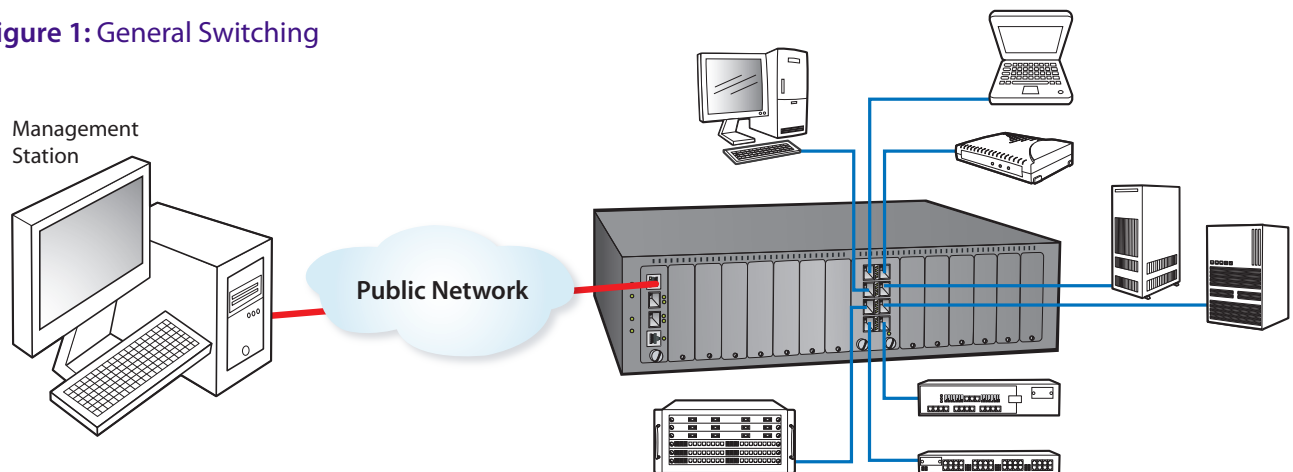
The EM316SW-8FX 8-port Fast Ethernet Optical Switch complements the Fiber Driver® optical multi-service platform transport solution. Switches improve network performance by isolating traffic to only the path between sending and receiving devices.

The 2-slot module includes eight SFP ports that support standard MSA-compliant transceivers covering the 100Base-FX protocol. Each port operates at 100 Mbps with full duplex for reliable Fast Ethernet switching.

The module supports aging MAC tables to maximize the power of the switch for large networks. Older entries disappear to free space for the switch to maintain current routing records and avoid network flooding allowed by hubs.

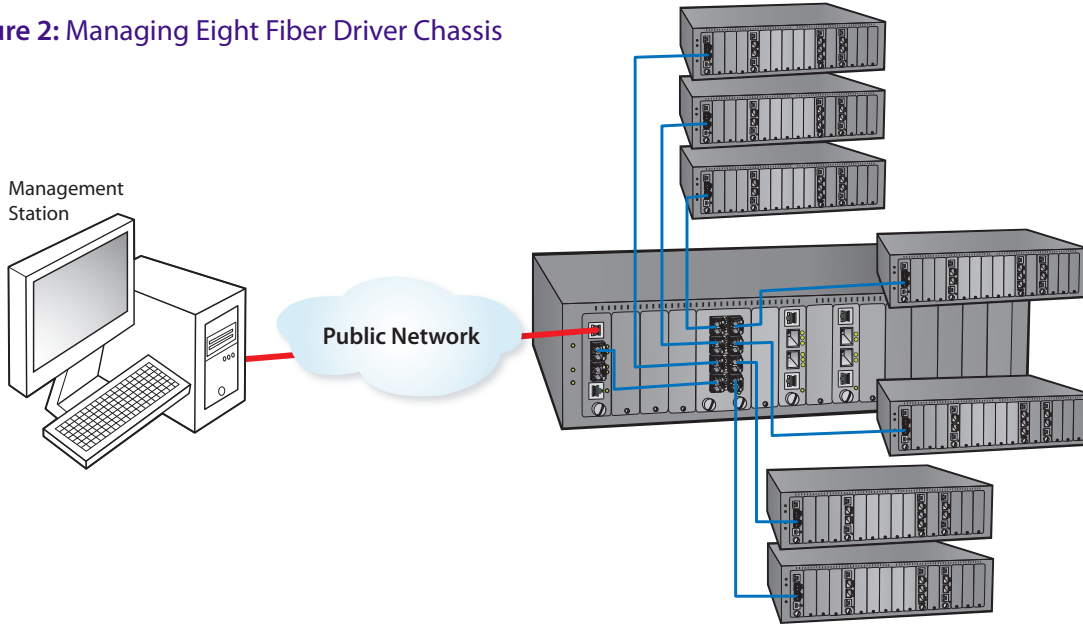
The Fiber Driver EM316LNXM-OT adds network management access to each Fiber Driver chassis system. The manager installs in the same chassis as managed modules (Figure 1), and provides command line and graphical environments for administrators on the network through either a command line interface (CLI) or MRV’s graphical manager MegaVision. Using the 8-port switch in one managed chassis (Figure 2) provides a consolidated network connection point for up to seven additional Fiber Driver chassis running any application modules or combinations.

Figure 1: General Switching



Datasheet

Figure 2: Managing Eight Fiber Driver Chassis



Physical Specifications	
Operating Temperature	0°C to 50°C (32°F to 122°F)
Storage Temperature	-40°C to 70°C (-40°F to 158°F)
Relative Humidity	85% maximum, non-condensing
Physical Dimensions (H x W x D)	75 mm x 50 mm x 175 mm deep (3" x 2" x 7")
Weight	Approximately 300 g (10.6 oz)
Regulatory Compliance	FCC Part 15 (Class A); IC (Class A); EMC Directive: Emission (Class A) and Immunity; RoHS Directive; China RoHS; REACH Directive; WEEE Directive; The Quality Management System is certified to ISO 9001 by QMI-SAI Global The Environmental Management System is in compliance with ISO 14001

Ordering Info	Model	Function	Protocol	Connectors
	EM316SW-8FX	8-port Fast Ethernet Optical Switch	Fast Ethernet	SFP (x8)

Visit the MRV website at www.mrv.com or contact your nearest authorized MRV dealer for more information.

MRV has more than 50 offices throughout the world. Addresses, phone numbers and fax numbers are listed at www.mrv.com. Please e-mail us at info@mrv.com or call us for assistance.

MRV Los Angeles
20415 Nordhoff Street
Chatsworth, CA 91311
800-338-5316
818-773-0900

MRV Boston
300 Apollo Drive
Chelmsford, MA 01824
800-338-5316
978-674-6800

MRV International
Business Park Moerfelden
Waldeckerstrasse 13
64546 Moerfelden-Walldorf
Germany
Tel. (49) 6105/2070
Fax (49) 6105/207-100

All statements, technical information, and recommendations related to the products herein are based upon information believed to be reliable or accurate. However, the accuracy or completeness thereof is not guaranteed, and no responsibility is assumed for any inaccuracies. Please contact MRV Communications for more information. MRV Communications and the MRV Communications logo are trademarks of MRV Communications, Inc. Other trademarks are the property of their respective holders.