

## T1 and E1 Fiber Modems



### Highlights

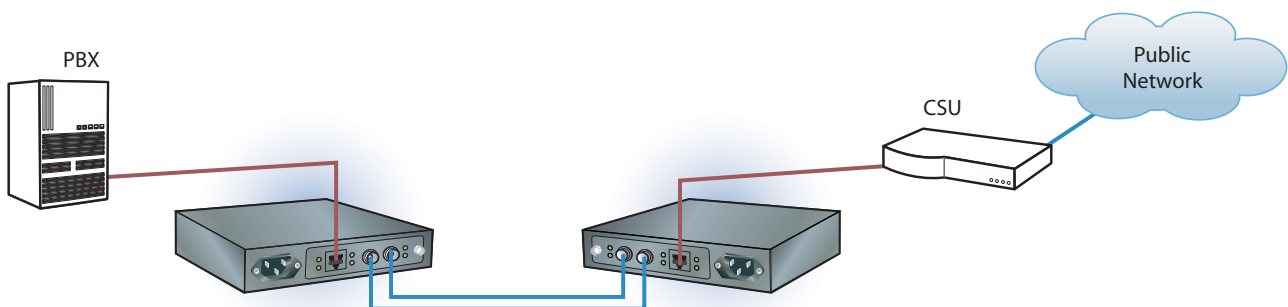
- Fiber converter for T1 (ANSI T1.403) or E1 (G.703)
- Built-in elastic buffer to remove jitter
- 6 LED indicators to help troubleshooting
- AMI/B8ZS/HDB3 line code support
- Up to 100 km transmission on single-mode or 10 km on multi-mode fiber
- Local and remote loopback test
- Hot-swap support
- SNMP management
- Fiber Driver chassis compatibility

### Overview

The Fiber Driver® family of EM316T1 and EM316E1 modules are designed to extend the distance and transmission reliability of T1 (1.544 Mbps) or E1 (2.048 Mbps) traffic. These units convert electrical signals to optical signals, and transmit them up to 10 km on multi-mode fiber or up to 100 km on single-mode fiber. The EM316T1 and EM316E1 are transparent to the framing format, and they support AMI or B8ZS (T1) and HDB3 (E1) line codes, respectively. They include an internal elastic buffer to remove jitter from the transmitted data and six LED indicators to aid in managing the module. A management agent is incorporated on the module for remote administration from the Fiber Driver Network Management Module (NMM).

As part of the Fiber Driver family, the EM316T1 and EM316E1 modules fit in all Fiber Driver chassis types, support local and remote loopback tests, and may connect to any T1 or E1 device including PBXs, multiplexers, video CODECS, routers, network servers, and ATM/frame relay switches. Module benefits include extended distances, improved quality of transmission, better security, remote management capability, and high density.

For additional information including pricing and availability, contact your MRV Communications sales representative today.



**Datasheet****Physical Specifications**

<b>Operating Temperature Range</b>	0° to 50°C (32°F to 122°F)
<b>Storage Temperature</b>	-40°C to 70°C (-40°F to 158°F)
<b>Relative Humidity</b>	85% maximum, non-condensing
<b>Physical Dimensions</b>	25 mm x 75 mm x 175 mm deep (1" x 3" x 7" deep)
<b>Weight</b>	120 - 240 g (4.2 - 8.5 oz) depending on configuration
<b>Regulatory Compliances</b>	FCC Part 15 (Class A); IC (Class A); EMC Directive: Emission (Class A) and Immunity; RoHS Directive; China RoHS; WEEE Directive

**Electrical Specifications**

<b>T1 Electric Interface</b>		<b>E1 Electric Interface</b>	
Transmission Rate:	1.544 Mbps	Transmission Rate:	2.048 Mbps
Line Code:	Supports both AMI and B8ZS	Line Code:	HDB3
DS-1 Signal:	Conforms to ANSI T1.403	E1 Signal:	Conforms to ITU-T G.703
Connector:	RJ-48	Connector:	BNC or RJ-45
Line Impedance:	100 Ohm	Line Impedance:	Default setting: 75 Ohm for unbalanced coax
LEDs:	Power, Transmit, Receive, Fiber Signal Detect, Loss of Copper Signal, Alarm	LEDs:	Power, Transmit, Receive, Fiber Signal Detect, Loss of Copper Signal, Alarm

**Ordering Information**

Model	Function	Protocol	Port Connectors <sup>1</sup>	Link Connector <sup>1</sup>	Wavelength (nm)	Min. Budget Loss (dB)	Approx. Range <sup>2</sup> (km)
<b>EM316T1/M</b>	T1 copper to MM fiber	T1	RJ-48/RJ-45	ST	820	DL <sup>3</sup>	0 - 4
<b>EM316T1/S1</b>	T1 copper to SM fiber	T1	RJ-48/RJ-45	ST	1310	15	5 - 30
<b>EM316T1/S2</b>	T1 copper to SM fiber	T1	RJ-48/RJ-45	ST	1310	25	25 - 50
<b>EM316T1/S3</b>	T1 copper to SM fiber	T1	RJ-48/RJ-45	ST	1550	25	50 - 100
<b>EM316E1/M</b>	E1 copper to MM fiber	E1	Coax - BNC	ST	820	DL <sup>3</sup>	0 - 4
<b>EM316E1/S1</b>	E1 copper to SM fiber	E1	Coax - BNC	ST	1310	15	5 - 30
<b>EM316E1/S2</b>	E1 copper to SM fiber	E1	Coax - BNC	ST	1310	25	25 - 50
<b>EM316E1/S3</b>	E1 copper to SM fiber	E1	Coax - BNC	ST	1550	25	50 - 100
<b>EM316E1RJ/M</b>	E1 copper to MM fiber	E1	RJ-45	ST	820	DL <sup>3</sup>	0 - 4
<b>EM316E1RJ/S1</b>	E1 copper to SM fiber	E1	RJ-45	ST	1310	15	5 - 30
<b>EM316E1RJ/S2</b>	E1 copper to SM fiber	E1	RJ-45	ST	1550	25	25 - 50
<b>EM316E1RJ/S3</b>	E1 copper to SM fiber	E1	RJ-45	ST	1550	25	50 - 10

<sup>1</sup> Default connectors listed. Contact MRV sales for other options.

<sup>2</sup> Distances are approximate and assume 9 μ Singlemode and 62.5 μ Multimode.

<sup>3</sup> Dispersion Limited

MRV has more than 50 offices throughout the world. Addresses, phone numbers and fax numbers are listed at [www.mrv.com](http://www.mrv.com). Please e-mail us at [info@mrv.com](mailto:info@mrv.com) or call us for assistance.

MRV Los Angeles  
20415 Nordhoff Street  
Chatsworth, CA 91311  
800-338-5316  
818-773-0900

MRV Boston  
300 Apollo Drive  
Chelmsford, MA 01824  
800-338-5316  
978-674-6800

MRV International  
Business Park Moerfelden  
Waldeckerstrasse 13  
64546 Moerfelden-Walldorf  
Germany  
Tel. (49) 6105/2070  
Fax (49) 6105/207-100

All statements, technical information, and recommendations related to the products herein are based upon information believed to be reliable or accurate. However, the accuracy or completeness thereof is not guaranteed, and no responsibility is assumed for any inaccuracies. Please contact MRV Communications for more information. MRV Communications and the MRV Communications logo are trademarks of MRV Communications, Inc. Other trademarks are the property of their respective holders.