

Case Study: HUB TELECOM



**Application Challenges & Major Issues**

- Keep the common transport design in place
- Critical network expansion to enable the next step in Hub telecom’s capacity growth
- Meet stringent Key Performance Indicators (KPIs) with assured and verified SLA for 99.999% service availability

**Solution:**

- Metro backbone nodes: MRV’s LambdaDriver™ Optical Transport & WDM system
- Access and Aggregation: Fiber Driver™ Optical Transport Access System and OptiSwitch® Carrier Ethernet Access System
- Service Provisioning and Network Management System

**Customer Benefits**

- Scalable and future-proof metro backbone
- Offers advanced services to Hub telecom’s customers (e.g. L2 & L3 VPN)
- Enables end-to-end Ethernet service visibility combined with hardware-based OAM and SLA monitoring & measurement tools with nano-second accuracy

**HUB TELECOM AT A GLANCE:**

Hub telecom, a subsidiary of Aeroports de Paris, comprises Hub telecom, a telecom operator in B2B, and Hub telecom region, one of the leaders in France in tracking & tracing services of goods and merchandise. The company has a strong expertise in the three fields of telecommunications, traceability and mobility, and is uniquely placed as the benchmark in the telecom and professional mobility market. Besides operating in most airports in France and certain specialist high density sites (the exhibition park at the Porte de Versailles (Paris), the port of Calais etc.). Hub telecom and its subsidiary Hub telecom region can rely on a network of 7 regional agencies in France and meet the specific needs of almost 2,300 companies and key accounts in the sectors of airport management, transportation and logistics.

Hub telecom offers the following services:

- Voice over IP (indoor or outdoor solution)
- WiFi for business
- “LANissimo”: L2 VPN services
- “IPer VPN”: L3 VPN services
- Internet Service Provider
- Radio network for mobility

**WHAT IS THE CUSTOMER SAYING ABOUT MRV SOLUTION?**

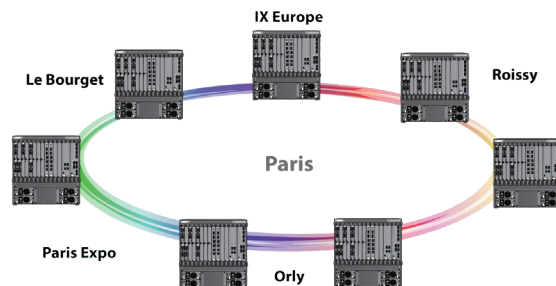
“We are pleased to be working with Interdata and MRV on this critical network expansion,” said Bernard Nahoum, Services and Operations Director of Hub telecom. “Interdata’s deep knowledge and experience in designing and implementing Carrier Ethernet solutions complemented with MRV’s flexible and scalable technology made them the obvious partner to assist us in completing the next step in our growth.”

“As global travelers utilize a growing array of mobile devices, data consumption around France’s major airports will continue to increase exponentially. MRV’s applications will allow Hub Telecom to quickly deploy additional capacity on its network to meet this growing demand for bandwidth,” stated Mr. Thierry Poulain, CEO of Interdata.

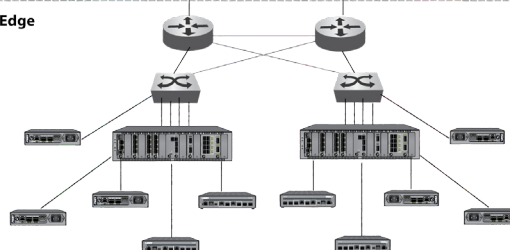
Service Provisioning & Network Management System



WDM Ring MRV



Aggregation and Edge MRV



## Case Study: HUB TELECOM

### MRV SOLUTION:

Using MRV's optical transport and WDM solutions including the MRV LambdaDriver™, Interdata has designed backbone optical transport rings across the Paris Metropolitan area enabling high-capacity multi-service transport for GigE, 10GE and SDH services across Paris-Orly Airport, Roissy Charles de Gaulle Airport and the greater Paris metro area. Interdata also provide carrier Ethernet exchange for international services and service availability for 99.999 SLA leveraging MRV OptiSwitch® and Fiber Driver™ solutions. Additionally, MRV's Optical Transport solution provides data center connectivity and disaster recovery.

### WHY MRV?

- Field-proven solution for Tier-1 market and reliable references
- Local installation/training/support
- Extremely flexible Carrier Ethernet portfolio
- Future-proof solution enabling capacity expansion to meet the growing demand for bandwidth
- Strong expertise and knowledge to overcome project barriers
- Partnership - customer focus & responsiveness

### ABOUT INTERDATA

Interdata is one of western Europe's leading suppliers of optical communications equipment from global manufacturers, as well as telecommunications solutions and services, including infrastructure, broadband optical networks, mobile and IP communications, network security, network integration and optimization. Additional information on Interdata can be found at the company website ([www.interdata.fr](http://www.interdata.fr))

### ABOUT MRV

MRV Communications is a global leading supplier of Optical Communications Systems including Carrier Ethernet Access, WDM Optical Transport Systems, and infrastructure Provisioning & Management solution since 1988.

MRV Communications' field proven track record totals \$1 Billion install-base with over 100,000's optical communications systems for 100's wireline and wireless service providers and 1,000's of enterprises around the world including some of the world's largest optical Ethernet carrier networks.

MRV Communications operates multiple R&D centers in the United States, Europe and Asia, along with 50 support centers and 21 regional sales offices.

---

MRV operates Worldwide sales and service offices across four continents.

Contact us at [info@mrv.com](mailto:info@mrv.com)

#### MRV Communications

Corporate Headquarters 300 Apollo Drive  
Chelmsford, MA 01824

<http://www.mrv.com>



All statements, technical information and recommendations related to the products herein are based upon information believed to be reliable or accurate. However, the accuracy or completeness thereof is not guaranteed, and no responsibility is assumed for any inaccuracies. Please contact MRV Communications for more information. MRV Communications and the MRV Communications logo are trademarks of MRV Communications, Inc. Other trademarks are the property of their respective holders.